

## Mouse Anti-6X Histidine Tag Monoclonal Antibody – Raw Ascites Fluid

**Catalog #:** IPA004RA

**Quantity:** 100 uL

**Lot#:** 100101

### Applications

ELISA, Western Blot

### Background

Recombinant genetic technologies often utilize C- or N-terminus polyhistidine tags as a means of identifying and/or purifying the resultant recombinant proteins. The anti-6X His tag monoclonal antibody detects both C- and N- terminus 6X His tags (His-His-His-His-His) in Western blots and will not detect larger tags.

This antibody works with the following vector systems: pET 28, 30,32 and Invitrogen's pLZ.

These antibodies are ideal for determining whether a novel monoclonal antibody against a peptide-6X - His tag conjugate is binding to the peptide or the histidine tag; IPA004 is a powerful negative control antibody

### Concentration / Suggested Working Dilution

1/100 to 1/400 (for BCIP/NBT substrate)

\*use larger amounts of antigen when working with higher dilutions

### Sample Data

**Sample 1:** Whole cellular extract of BL21 (DE3) pJT4pTT9 bacteria carrying gene encoding for His-Rel E protein (uninduced)

**Sample 2:** Induced

**Sample 3:** Induced (1/2 dilution)

**Sample 4:** Purified His-Rel E protein (~17 kDa)

\* for light emitting substrates the anti-His tag 2C6.1 monoclonal antibody can be diluted out further.

\*\* if the background is high dilute the antibodies in TTBS containing 5% milk powder.

### Formulation

Raw Ascites bioreactor concentrated mouse monoclonal antibody

### Presentation

100uL of raw ascitic fluid containing 0.1% NaN<sub>3</sub>,

### Shipping Conditions:

On ice packs

### Storage:

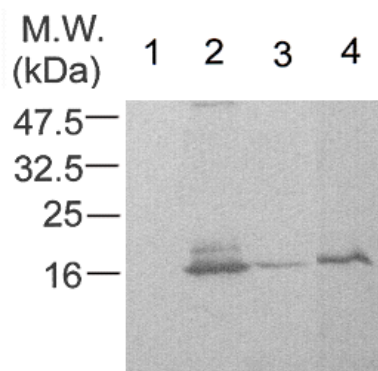
-20°C to +4°C

### Host/Isotype

IgG2a / mouse

### Clone

2C6.1



**FOR IN VITRO RESEARCH PURPOSES ONLY. NOT INTENDED FOR USE IN HUMAN OR ANIMALS.**

**Caution: Contains Sodium Azide**

To place your order, please contact us via:

T: (250)-483-0308 | F: (250) 483-0309 | E: [contact.ipa@immunoprecise.com](mailto:contact.ipa@immunoprecise.com) | W: <http://www.immunoprecise.com>