

# FACTS ABOUT SOM<sup>AI</sup> PRO

## IT IS BASED ON:

- VIRTUAL SCREENING PLATFORM
- ARTIFICIAL INTELLIGENCE
- ANALYSIS OF MOLECULAR FIELD MAPS

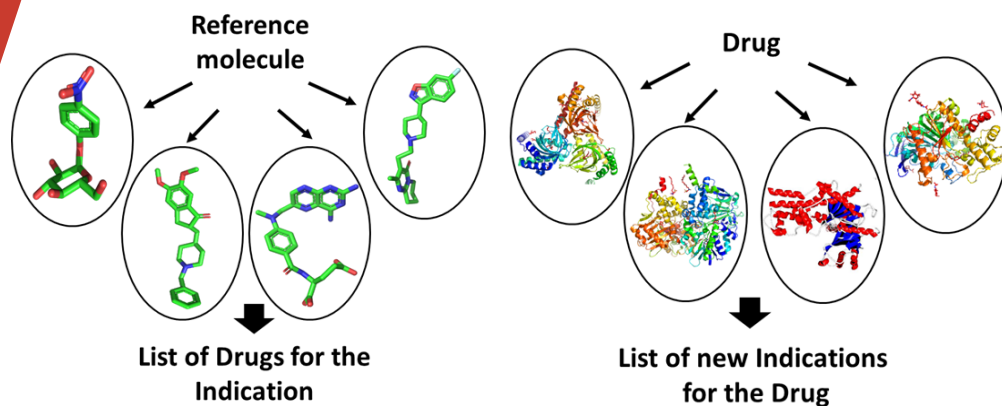
## TECHNOLOGY PREDICTIVITY:

- **FOR 28%** OF OUR PROJECTS A **POSITIVE IN VITRO LEAD** WAS IDENTIFIED
- **12 %** OF OUR ORPHAN PROJECTS HAVE REACHED **PHASE 2**

## OUR DISCOVERY PROCESS

**SOM<sup>AI</sup> PRO DRUG**  
NEW DRUGS FOR AN INDICATION

**SOM<sup>AI</sup> PRO TARGET**  
NEW MEDICAL USES FOR A DRUG



**SOM**  
BIOTECH

Barcelona Scientific Park,  
Baldri Reixac, 4, Torre I  
08028 Barcelona, Spain  
info@sombiotech.com  
+34 934 020 150

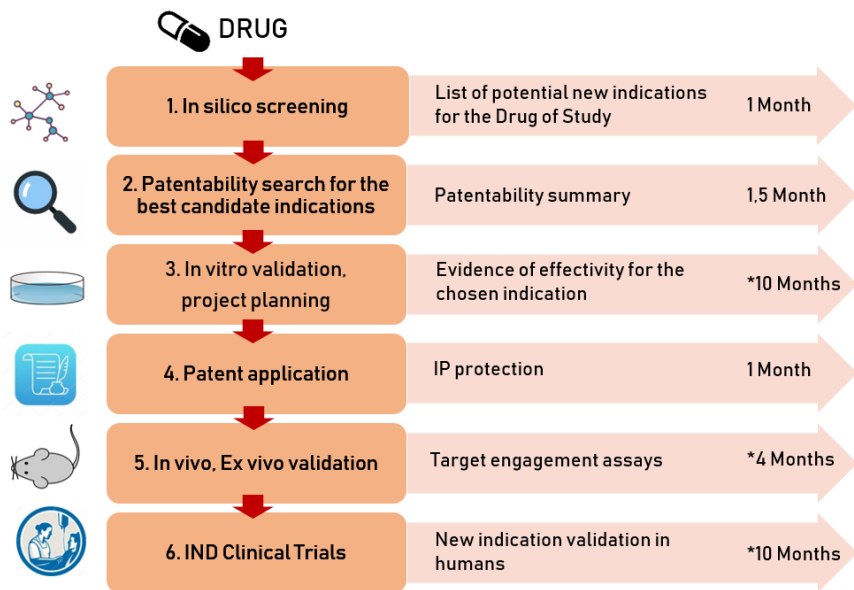
# SOM<sup>AI</sup> PRO COMPUTATIONAL PLATFORM

COLLABORATION PROPOSAL

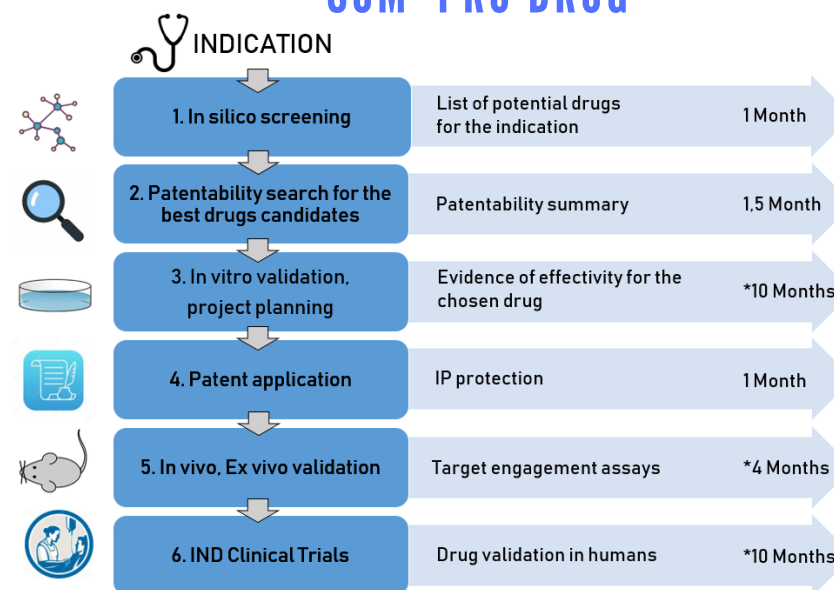


# What is the need of your company?

## NEW MEDICAL USES FOR A DRUG SOM<sup>AI</sup> PRO TARGET



## NEW DRUGS FOR AN INDICATION SOM<sup>AI</sup> PRO DRUG



### 1. IN SILICO SCREENING

- In silico screening is performed with the use of SOM Artificial Intelligence PRO Technology, SOM<sup>AI</sup> PRO
- This Platform uses a database of biological targets comprising 400,000 ligands and includes all relevant software and predictive tools

### 2. PATENTABILITY SEARCH FOR THE BEST CANDIDATE INDICATIONS

- Based on the results of SOM<sup>AI</sup> PRO, the team of SOM Biotech will evaluate patentability and suitability of repurposing strategy (safety, pharmacology, etc.) for the candidate indications, and select the most relevant ones

### 3. IN VITRO VALIDATION, PROJECT PLANNING

- Outlining project plan (identify labs, investigators, risks, feasibility clinical PoC, etc.)
- Exploration of the market opportunities for chosen indications
- Validation In-vitro: confirm activity on the selected target
- Prepare TPP, engage expert team
- Elaborate a Regulatory Roadmap

### 4. PATENT APPLICATION

- File WW patent at least on the new therapeutic use
- Explore patient advocacy, market access, and pricing

### 5. IN VIVO, EX VIVO VALIDATION

- With the use of the animal models
- Build a strong KOL group
- Plan IND Clinical Trials
- Secure market exclusivity through Orphan Drug Designation if it applies

### 6. IND CLINICAL TRIALS

- If the Company wants, SOM Biotech can proceed with development up to Phase 2a PoC, and perform the following steps:
- Develop until NDA in US and EU
- Obtain Marketing Approval

### 1. IN SILICO SCREENING

- In silico screening is performed with the use of SOM Artificial Intelligence PRO Technology - SOM<sup>AI</sup> PRO
- The Platform includes all relevant software and predictive tools. It uses a database of the drugs which are already on the market or in advanced clinical phases of development (10,000 drugs)

### 2. PATENTABILITY SEARCH FOR THE BEST DRUG CANDIDATES

- Based on the results of SOM<sup>AI</sup> PRO, the team of SOM Biotech will evaluate patentability and suitability of repurposing strategy (safety, pharmacology, etc.) for the best drug candidates, and select the most relevant ones

### 3. IN-VITRO VALIDATION, PROJECT PLANNING

- Outlining project plan (identify labs, investigators, risks, feasibility clinical PoC, etc.)
- Exploration of the market opportunities for chosen drug
- Validation In-vitro: confirm activity on the selected target
- Prepare TPP, engage an expert team
- Elaborate a Regulatory Roadmap

### 4. PATENT APPLICATION

- File WW patent at least on the new therapeutic use
- Explore patient advocacy, market access, and pricing

### 5. IN VIVO, EX VIVO VALIDATION

- With the use of the animal models
- Build a strong KOL group
- Plan IND Clinical Trials
- Secure market exclusivity through Orphan Drug Designation if it applies

### 6. IND CLINICAL TRIALS

- If the Company wants, SOM Biotech can proceed with development up to Phase 2a PoC, and perform the following steps:
- Develop until NDA in US and EU
- Obtain Marketing Approval

## AGREEMENT TYPES

	CO-DEVELOPMENT	PARTNERSHIP
<b>IP</b>	Shared	Belongs to the Company
<b>PAYMENTS</b>	Low cost	Full cost
<b>RISKS</b>	Shared	Full
<b>CONDITIONS</b>	Company can in-license at any stage (royalties apply)	Company has all the rights – full partnership fee

\* Estimated period will depend on the specific indication